

Control Centre



Control Centre is a web-based application that allows remote configuration, data consultation, report generation, and management of MonitEM and MonitEM-Lab continuous monitors, among other functions.

The Control Centre is accessible from any computer with a web browser and offers the option of a public Internet page to display data and compare it easily with regulated limits.

BETTER GEOPOSITIONING

USER FRIENDLY INTERFACE (Web browser)

ALARM NOTIFICATION AND MANAGEMENT

- Remote alarm configuration
- Alarm notification via email



DATA MANAGEMENT

- Save data sent to each unit
- Historical data (filtered)
- Automatic reporting

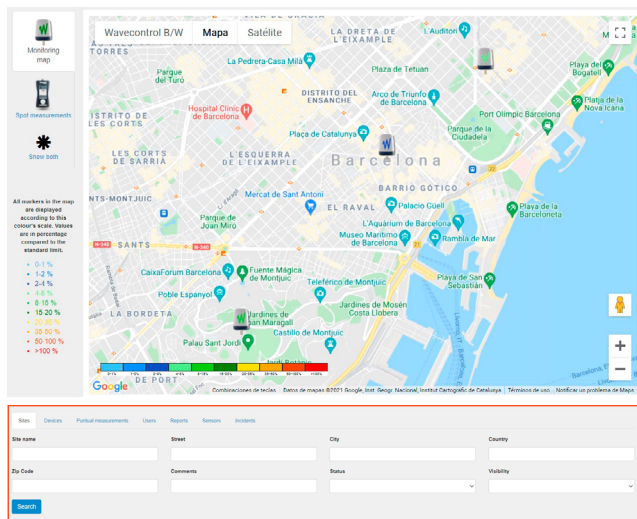
DATA VISUALIZATION

- Live view of all units
- Graph visualization
- Public page display

MANAGEMENT OF UNITS

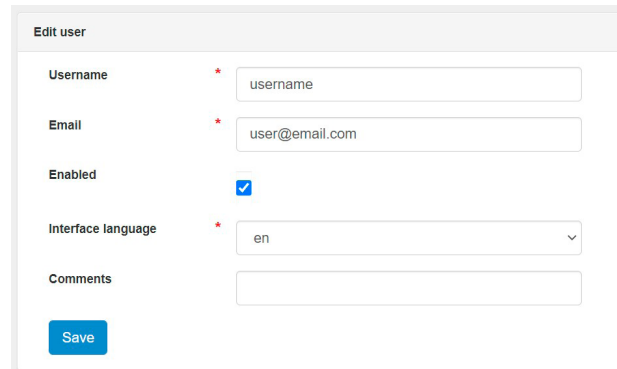
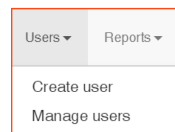
- MonitEM and MonitEM-Lab
- Remote configuration of units

Control Centre Features



User-friendly interface

The Control Centre is designed for a web browser interface with powerful parametric search functions. Users can easily position units and measurement sites on Google map and easily monitor the status of each sites and their units, if they are active, inactive or with any incident.



Powerful User Roles

User roles can be effectively assigned with different levels of control over the management over the Control Centre, to configure the data sent, create, and manage a single or multiple Control Centres or just able to use the basic general features of the Control Centre. Different languages can be assigned also.



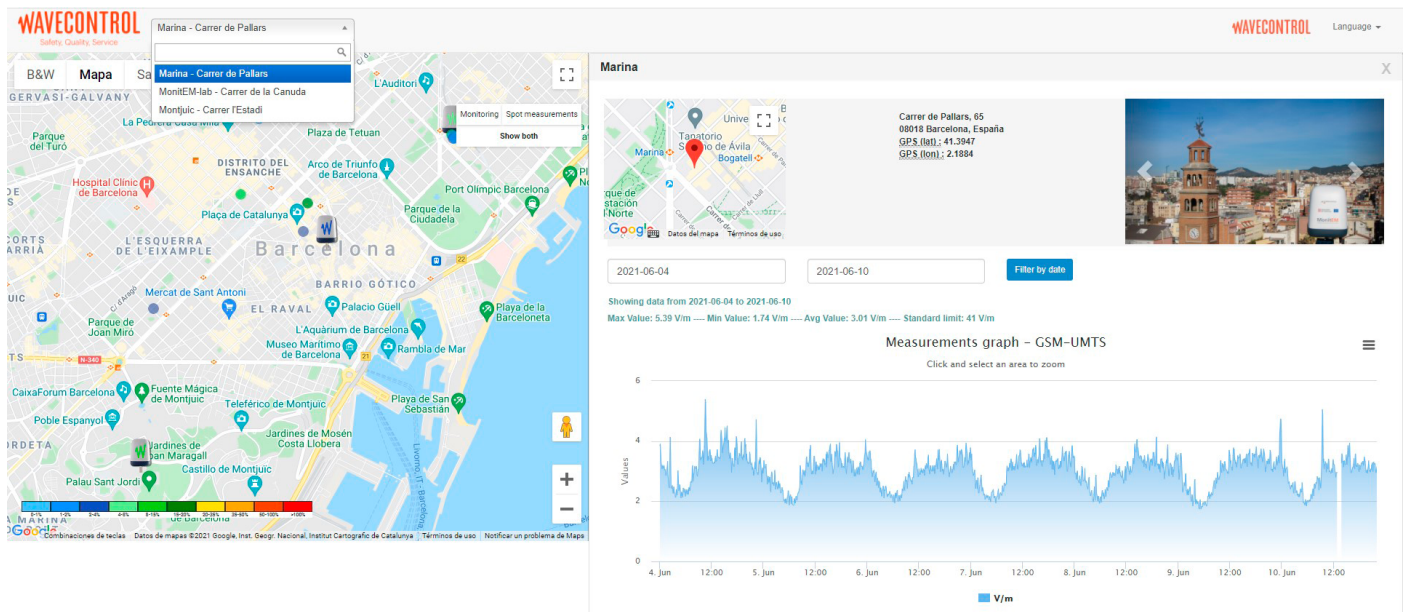
Management of Units

Unlimited number of MonitEM and MonitEM-Lab units can be remotely configured and managed through the Control Centre. Data from the MonitEM, MonitEM-Lab and the portable SMP2 devices can be sent to the Control Centre easily. Intelligent and global search for units, sites, users, reports, and incidents.



Visualization Tools

The Control Centre has excellent visualization of the measurement data and battery information. The user has a live view of their measurement from the available units. The graphs of individual units can be viewed as well as the graphs of all units simultaneously. Indication of the weather history in battery graphs.




Public Page Display

The Control Centre provides a public page, where the public can have access to the EMF levels in the areas near them and see how these EMF levels compare to the standard limits.

Open API for customized pages

Availability of open API for easy creation and customization of pages effectively with an external service.



Marina
 Status : Incident
 Carrer de Pallars 65, Barcelona España
 Serial number : 13MT0249

Automatic Reports and Notification

Automatic reports (in different formats) sent weekly or monthly via email. Manage notification contacts for reports and incidences for any measurement site. Easy creation and customization of user-friendly report templates. Reports can also be obtained at any time upon request.

Data Management

Access to all the measurement historical data and device logs saved on the Control Centre. User can filter the data by dates and manage measurement results and graphs of all units on the Control Centre... Easy configuration of parameters such as device and site settings, alarm levels, communication parameters and Control Centre settings.

Alarm type	Created at	Status	Log	Action
Battery	23/06/2020 07:35:49	Validation pending	View Log	Validate alarm Report alarm
Hibernation	29/06/2020 10:50:41	Validation pending	View Log	Validate alarm Report alarm
Battery	02/07/2020 16:38:53	Validation pending	View Log	Validate alarm Report alarm
Hibernation	03/07/2020 23:45:08	Validation pending	View Log	Validate alarm Report alarm
Battery	23/07/2020 22:43:41	Validation pending	View Log	Validate alarm Report alarm
Hibernation	29/07/2020 23:08:27	Validation pending	View Log	Validate alarm Report alarm
Battery	14/08/2020 00:51:11	Validation pending	View Log	Validate alarm Report alarm
Hibernation	19/08/2020 20:16:42	Validation pending	View Log	Validate alarm Report alarm
Battery	07/09/2020 20:23:58	Validation pending	View Log	Validate alarm Report alarm
Battery	29/08/2020 12:38:53	Validation pending	View Log	Validate alarm Report alarm
Hibernation	04/10/2020 09:08:15	Validation pending	View Log	Validate alarm Report alarm

Alarms and Events

The Control Centre provides a quick way to check whether any alarm has been raised at any of the registered measurement sites, which are sent via email to the administrator of each site for validation.

Technical Specifications

System Requirements	
Platform	HTTP (Web-based) server Webapp developer on a strong PHP Framework
Installation requirements	Linux Debian 10 or more 64 bits, internet connection Minimum 8 GB RAM and 50 GB Hard disk Remote access with SSH
Interface	
Administration interface	Web browser
Public interface	Web browser
Geo Positioning	Google Map
Features, Settings and Control	
Device Management	Management and Visualization of multiple units
Supported devices (Compatibility)	MonitEM and MonitEM-Lab
	Possibility to import 6-mins measurements from the SMP2 for high frequency probes
Device communication	Via 2G, 3G (MonitEM) and Ethernet (MonitEM-Lab)
Measurement intervals	1 to 60 minutes
Parameterization	Device and site settings, Alarm levels, standard limits, communication settings, user profiles, language selection, logo, set units for E/H field.
Available units	V/m, kV/m, $\mu\text{W}/\text{cm}^2$, mW/cm^2 , W/m^2 , A/m, μT , T, nT, mT, mG
Alarms and events	Receive and manage alarms from installed units (Timeout alarm, level alarm, door alarm, battery alarm, hibernation alarm)
Exportation	Dynamic graphs, measurement data and device log, customized reports (CSV, PDF formats)
Report Notifications	via email (weekly, monthly or at any time on demand)
Security and Administration	2 user profiles (manager and user)
Additional Service	
Hosted Control Centre	Eliminate infrastructure and server costs by using Wavecontrol cloud server
Technical Support	Support on installation and management of Control Centre

Product specifications and descriptions in this document subject to change without notice.